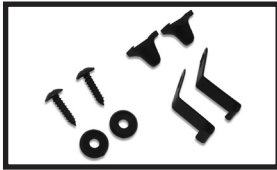


# WeatherTech®

## Sunroof Wind Deflector Installation Instructions



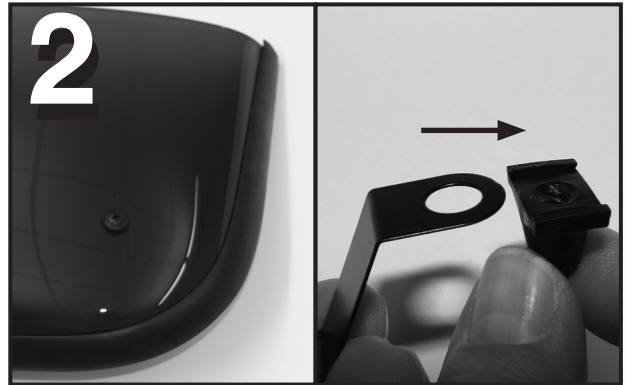
**Hardware Included**  
2 Screws  
2 MagiClip™ cones and clips  
1 Sunroof Deflector with  
AirCushion™ Gasket



**Tools Needed**  
You will need a #2 Phillips screw driver to complete this installation.



**1**  
Place the deflector on the vehicle's roof positioned slightly in front of the sunroof opening, making sure it is straight and evenly spaced on each side of the opening.



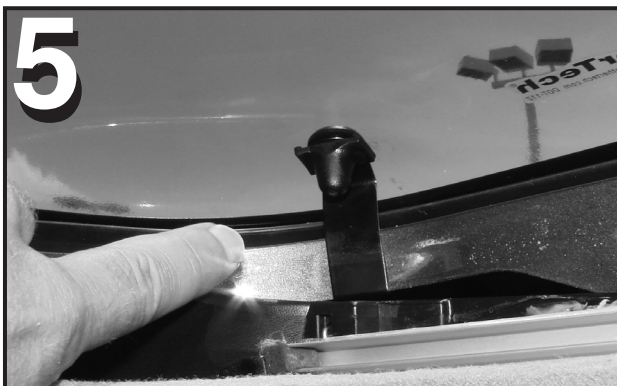
**2**  
Assemble the MagiClip™ by sliding the cone nuts onto the flat end of the clips as shown.



**3**  
Hook the clip onto the metal lip of the sunroof opening in a position corresponding to the hole in the deflector. It may be necessary to adjust the deflector's position slightly.



**4**  
Press upward on the MagiClip™ while turning the screw clockwise with some downward pressure. **DO NOT TIGHTEN** the screw fully at this time. Repeat steps 3 & 4 on the right side of the deflector.



**5**  
Ensure that the deflector is positioned straight, and adjust it until in the proper orientation. Tighten both screws until the MagiClip™ is flush with the bottom of the deflector as shown. Do not over tighten.



**Congratulations!**  
Your new WeatherTech®  
Sunroof Wind Deflector has been installed!